



OPTIONAL NOVA FACADE

ELWOOD 156 MKII

10M+

3  2  1 



OPTIONAL AURORA FACADE



OPTIONAL SOLSTICE FACADE



OPTIONAL ECLIPSE FACADE



OPTIONAL ZENITH FACADE

HOTONDO HOMES

FOREVER
SANCTUARY

• Forever part of the family •

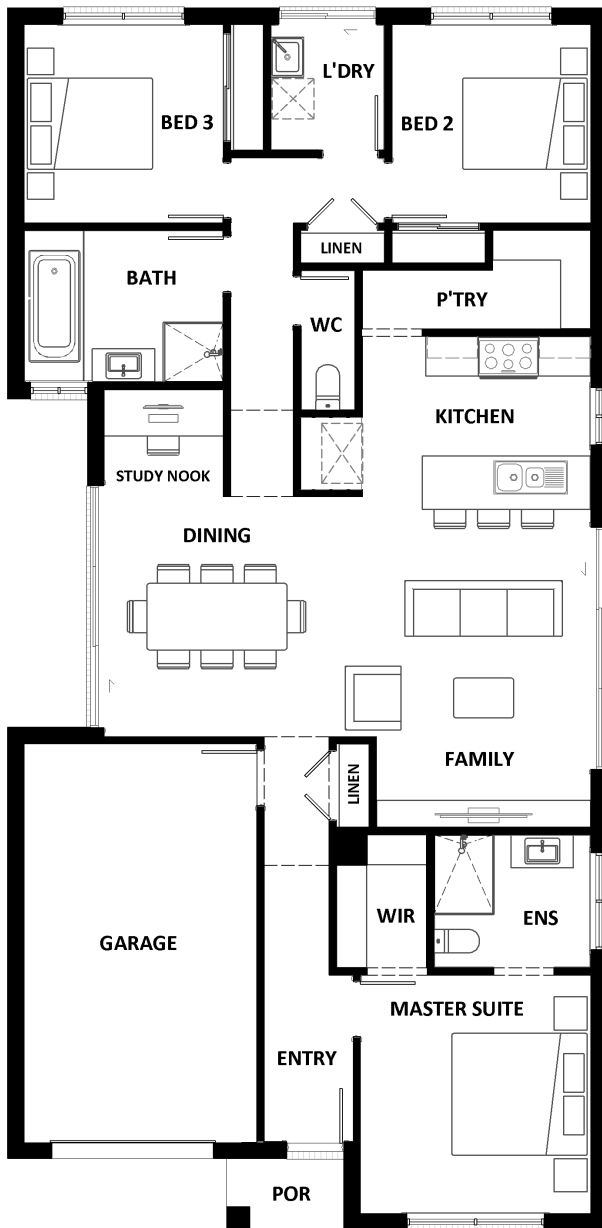
 **Hotondo Homes**

1800 677 156 | hotondo.com.au

ELWOOD 156 MKII

The Elwood 156 is a sensational and sensible design for narrow allotments. The master suite is at the front of the home and includes a walk-in-robe and ensuite. Sweeping around the master suite is the heart of the home which houses the kitchen with walk-in pantry, family and dining area. The remaining bedrooms are located at the rear of the property ensuring the master suite remains a private haven for parents. This design is available in four layout versions and larger 173 and 197 sizes.

LOT WIDTH: 10M+



HOME AREAS (m²)

Residence	130.02
Garage	23.59
Porch	1.90
Total	155.51
Total (sqsq)	16.74

OVERALL DIMENSIONS (m)

Width	8.99
Length	18.35

ROOM DIMENSIONS (m) width x length

Master Suite	3.47 x 3.60
Bedroom 2	3.00 x 3.00
Bedroom 3	3.00 x 3.00
Family	3.23 x 4.98
Dining	4.08 x 3.62
Garage	3.50 x 6.00